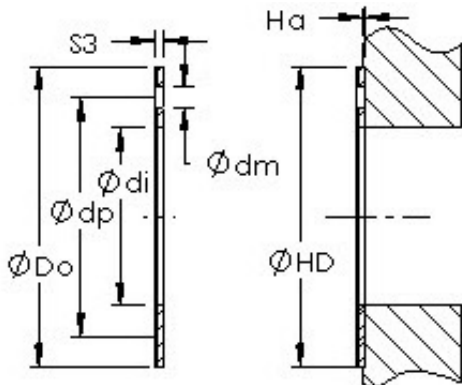




NSK?INDUSTRIA CUSCINETTI S.P.A.



AST AST20 WC321B plain bearings

Bearing No. AST20 WC321B

Bore Diameter	55,5752 mm
Outer Diameter	82,55 mm
Bearing Type	thrust washer
Shaft Dia., Nominal (d)	2.1880
Bearing Outside Diameter, Nominal(Do)	3.250
Washer Inside Diameter, Nominal (di)	2
Washer Inside Diameter Tolerance (di tol.) - +.010 / -0	+0.010 / 0
Washer Outside Diameter, Nominal (Do)	3
Washer Outside Diameter Tolerance (Do tol.) - +0 / -.010	+0 / .010
Washer Thickness, Nominal (S3)	0
Washer Thickness Tolerance (S3 tol.) - +.035 / -0	+0.035 / 0
Mounting Hole Dia. (dm)	0.192
Mounting Hole Pitch Dia. (dp)	2.755
Housing Counterbore Depth (Ha)	0.07
Housing Counterbore Depth Tolerance (Ha tol.) - +.010 / -.010	+0.010 / .010
Housing Counterbore Diameter, Nominal (HD)	3.250

AST20 WC321B Bearing 2D drawings and 3D CAD models



NSK?INDUSTRIA CUSCINETTI S.P.A.

Housing Counterbore Diameter Tolerance (HD tol.) - $+0.010 / -0$	$+0.010 / 0$
Material	Carbon steel shell with POM plastic liner